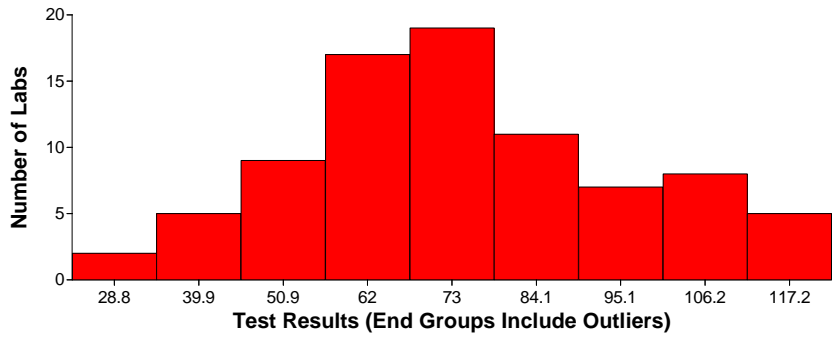


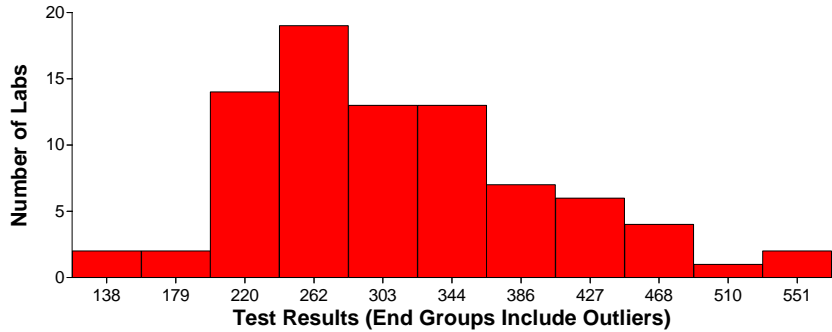
### Air and Emissions Fibers

**Shipment:** 414      **Matrix:** Air and Emissions  
**Analyte:** Fibers  
**Sample:** 1200  
**Technology:** PCM  
**Prep Method:**  
**Target:** 86      Fibers per mm2  
**Limits:** 6.7 to 139 Fibers per mm2  
**Basis:** Robust Statistics (Normal Distribution)  
**Robust Mean:** 74.1 Fibers per mm2  
**Std Dev:** 21.7448 Fibers per mm2  
**Median:** 69.9 Fibers per mm2  
**Totals for Matrix/Analyte/Technology:**  
**Labs: Pass:** 83      **Fail:** 0      **Total:** 83  
**Totals for Matrix/Analyte:**      **Labs: Pass:** 83      **Fail:** 0      **Total:** 83



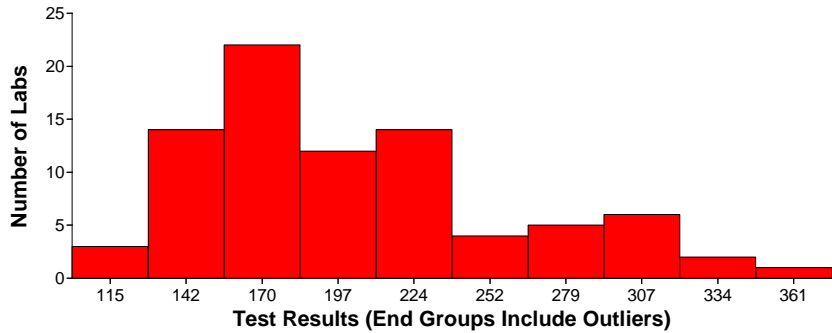
### Air and Emissions Fibers

**Shipment:** 414      **Matrix:** Air and Emissions  
**Analyte:** Fibers  
**Sample:** 3889  
**Technology:** PCM  
**Prep Method:**  
**Target:** 333      Fibers per mm2  
**Limits:** 54.9 to 551 Fibers per mm2  
**Basis:** Robust Statistics (Normal Distribution)  
**Robust Mean:** 306.3 Fibers per mm2  
**Std Dev:** 92.1738 Fibers per mm2  
**Median:** 297.73 Fibers per mm2  
**Totals for Matrix/Analyte/Technology:**  
**Labs: Pass:** 81      **Fail:** 2      **Total:** 83  
**Totals for Matrix/Analyte:**      **Labs: Pass:** 81      **Fail:** 2      **Total:** 83



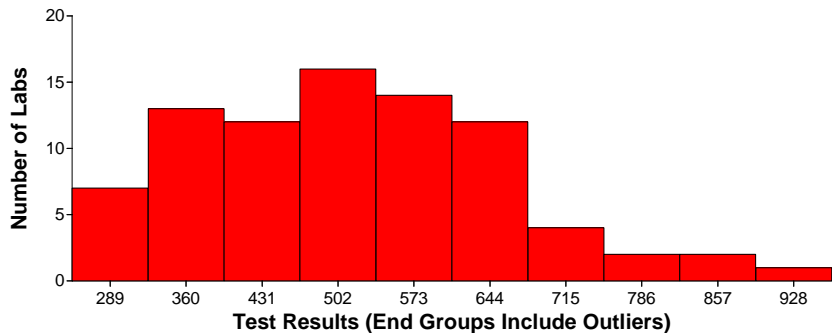
### Air and Emissions Fibers

**Shipment:** 414      **Matrix:** Air and Emissions  
**Analyte:** Fibers  
**Sample:** 4294  
**Technology:** PCM  
**Prep Method:**  
**Target:** 240      Fibers per mm2  
**Limits:** 32.6 to 361 Fibers per mm2  
**Basis:** Robust Statistics (Normal Distribution)  
**Robust Mean:** 203.7 Fibers per mm2  
**Std Dev:** 55.7019 Fibers per mm2  
**Median:** 191.7 Fibers per mm2  
**Totals for Matrix/Analyte/Technology:**  
**Labs: Pass:** 83      **Fail:** 0      **Total:** 83  
**Totals for Matrix/Analyte:**      **Labs: Pass:** 83      **Fail:** 0      **Total:** 83



### Air and Emissions Fibers

**Shipment:** 414      **Matrix:** Air and Emissions  
**Analyte:** Fibers  
**Sample:** 7389  
**Technology:** PCM  
**Prep Method:**  
**Target:** 573      Fibers per mm2  
**Limits:** 76 to 928 Fibers per mm2  
**Basis:** Robust Statistics (Normal Distribution)  
**Robust Mean:** 507.6 Fibers per mm2  
**Std Dev:** 148.4404 Fibers per mm2  
**Median:** 509.5 Fibers per mm2  
**Totals for Matrix/Analyte/Technology:**  
**Labs: Pass:** 82      **Fail:** 1      **Total:** 83  
**Totals for Matrix/Analyte:**      **Labs: Pass:** 82      **Fail:** 1      **Total:** 83



### Solid and Hazardous Waste Asbestos in Friable Material

### Solid and Hazardous Waste Asbestos in Friable Material

Shipment: 414 Matrix: Solid and Hazardous Waste

Analyte: Asbestos in Friable Material

Sample: 1863

Technology: PLM

Prep Method:

Target: 5.25 %

Limits: 1.2 to 8.1 %

Basis: Swa scoring

Robust Mean: 4.7 %

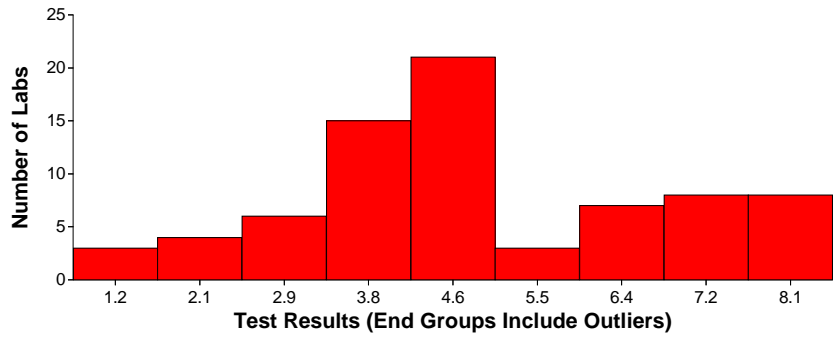
Std Dev: 2.0493 %

Median: 4.76 %

Totals for Matrix/Analyte/Technology:

Labs: Pass: 65 Fail: 10 Total: 75

Totals for Matrix/Analyte: Labs: Pass: 65 Fail: 10 Total: 75



### Solid and Hazardous Waste Asbestos in Friable Material

Shipment: 414 Matrix: Solid and Hazardous Waste

Analyte: Asbestos in Friable Material

Sample: 4067

Technology: PLM

Prep Method:

Target: 5.71 %

Limits: 1.5 to 16 %

Basis: Swa scoring

Robust Mean: 8.9 %

Std Dev: 3.5212 %

Median: 9.09 %

Totals for Matrix/Analyte/Technology:

Labs: Pass: 71 Fail: 4 Total: 75

Totals for Matrix/Analyte: Labs: Pass: 71 Fail: 4 Total: 75

