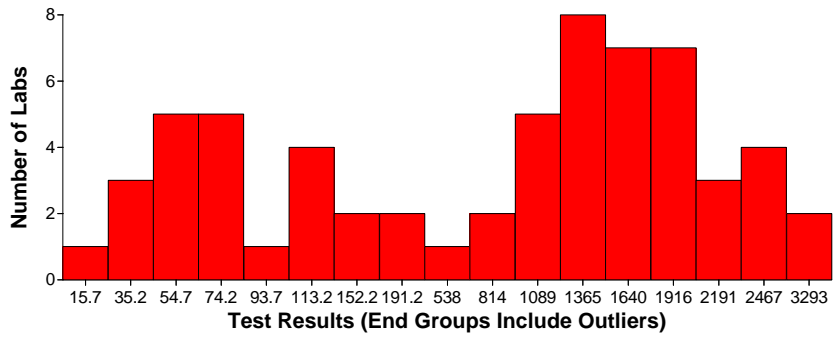


Air and Emissions Asbestos

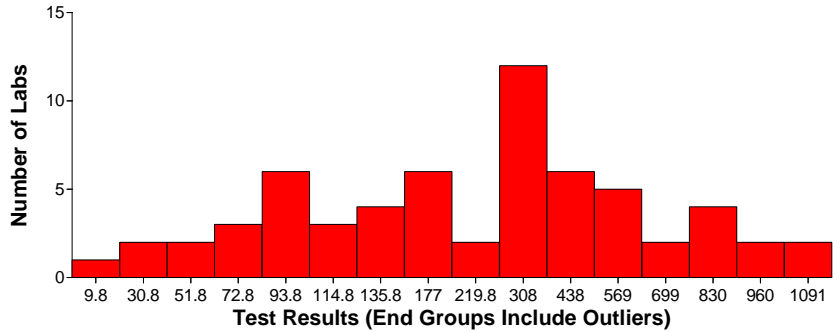
Shipment: 416 **Matrix:** Air and Emissions
Analyte: Asbestos
Sample: 5848
Technology: TEM
Prep Method:
Target: 74.2 Struct/ mm2
Limits: 7.4 to 191 Struct/ mm2
Basis: Manual Limits
Robust Mean: 1094.1 Struct/ mm2
Std Dev: 886.9747 Struct/ mm2
Median: 1220 Struct/ mm2



Totals for Matrix/Analyte/Technology:
Labs: Pass: 59 **Fail:** 3 **Total:** 62
Totals for Matrix/Analyte: **Labs: Pass:** 21 **Fail:** 2 **Total:** 23

Air and Emissions Asbestos

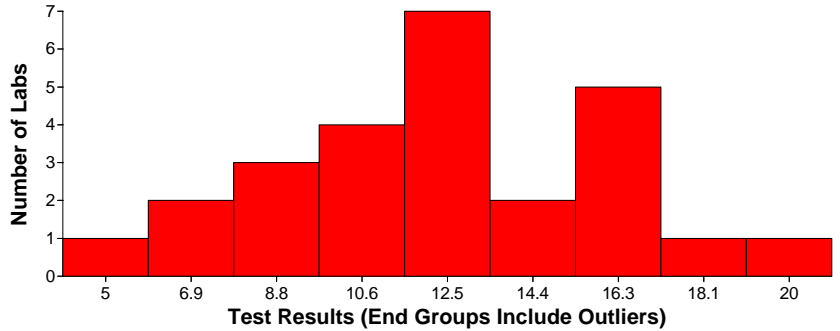
Shipment: 416 **Matrix:** Air and Emissions
Analyte: Asbestos
Sample: 9311
Technology: TEM
Prep Method:
Target: 93.8 Struct/ mm2
Limits: 9.4 to 220 Struct/ mm2
Basis: Manual Limits
Robust Mean: 340.9 Struct/ mm2
Std Dev: 285.8999 Struct/ mm2
Median: 265.54 Struct/ mm2



Totals for Matrix/Analyte/Technology:
Labs: Pass: 61 **Fail:** 1 **Total:** 62
Totals for Matrix/Analyte: **Labs: Pass:** 22 **Fail:** 1 **Total:** 23

Potable Water Asbestos

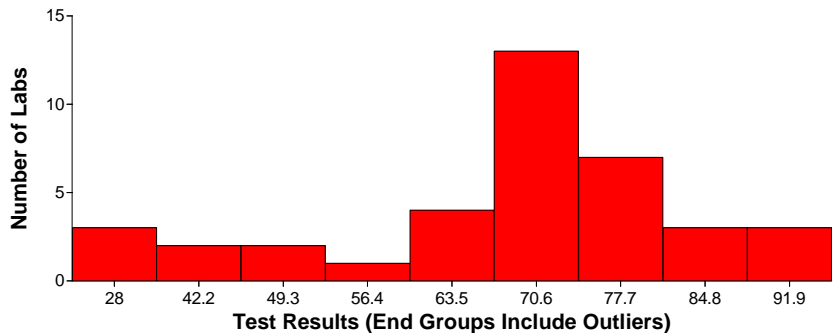
Shipment: 416 **Matrix:** Potable Water
Analyte: Asbestos
Sample: 6064
Technology: TEM
Prep Method:
Target: 15.6 MF/L
Limits: 4.24 to 20.8 MF/L
Basis: Stat Linear Regression
Robust Mean: 12.5 MF/L
Std Dev: 3.6884 MF/L
Median: 12.2 MF/L



Totals for Matrix/Analyte/Technology:
Labs: Pass: 26 **Fail:** 0 **Total:** 26
Totals for Matrix/Analyte: **Labs: Pass:** 26 **Fail:** 0 **Total:** 26

Solid and Hazardous Waste Asbestos in Non-Friable Material-TEM

Shipment: 416 **Matrix:** Solid and Hazardous Waste
Analyte: Asbestos in Non-Friable Material-TEM
Sample: 3382
Technology: TEM
Prep Method:
Target: 83.5 %
Limits: 28 to 113 %
Basis: Robust Statistics (Normal Distribution)
Robust Mean: 69.8 %
Std Dev: 20.9915 %
Median: 70 %

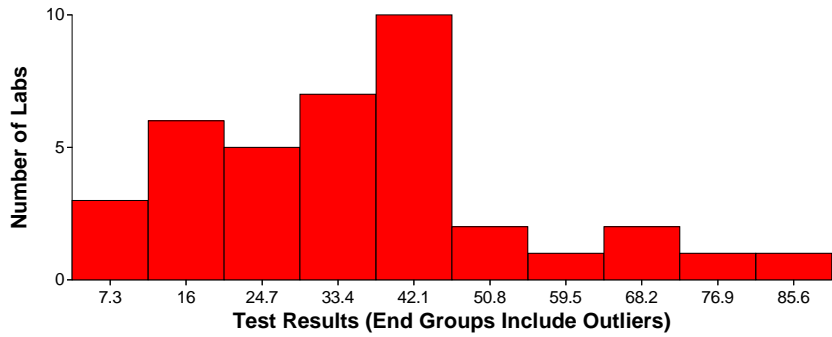


Totals for Matrix/Analyte/Technology:
Labs: Pass: 36 **Fail:** 2 **Total:** 38
Totals for Matrix/Analyte: **Labs: Pass:** 36 **Fail:** 2 **Total:** 38

Solid and Hazardous Waste Asbestos in Non-Friable Material-TEM

Solid and Hazardous Waste Asbestos in Non-Friable Material-TEM

Shipment: 416 **Matrix:** Solid and Hazardous Waste
Analyte: Asbestos in Non-Friable Material-TEM
Sample: 6107
Technology: TEM
Prep Method:
Target: 49.5 %
Limits: 5 to 85.6 %
Basis: Manual Limits
Robust Mean: 34.3 %
Std Dev: 17.9327 %
Median: 32.5 %



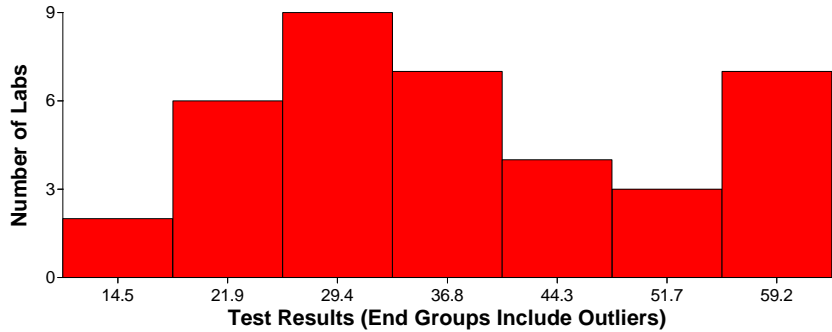
Totals for Matrix/Analyte/Technology:

Labs: Pass: 36 Fail: 2 Total: 38

Totals for Matrix/Analyte: Labs: Pass: 36 Fail: 2 Total: 38

Solid and Hazardous Waste Asbestos in Non-Friable Material-TEM

Shipment: 416 **Matrix:** Solid and Hazardous Waste
Analyte: Asbestos in Non-Friable Material-TEM
Sample: 3382
Technology: TEM
Prep Method:
Target: 24.9 %
Limits: 2.5 to 81.5 %
Basis: Manual Limits
Robust Mean: 37.4 %
Std Dev: 13.9123 %
Median: 35.25 %



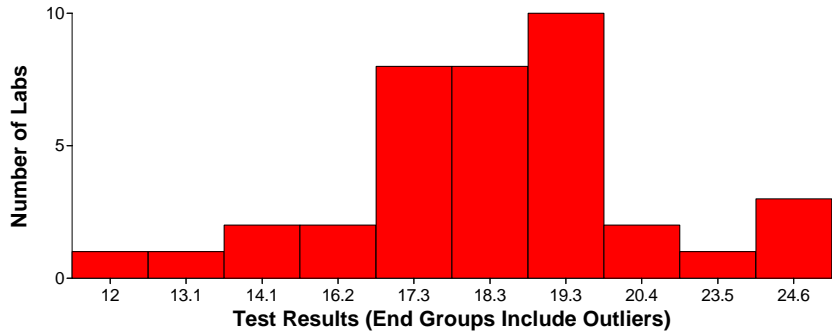
Totals for Matrix/Analyte/Technology:

Labs: Pass: 38 Fail: 0 Total: 38

Totals for Matrix/Analyte: Labs: Pass: 38 Fail: 0 Total: 38

Solid and Hazardous Waste Asbestos in Non-Friable Material-TEM

Shipment: 416 **Matrix:** Solid and Hazardous Waste
Analyte: Asbestos in Non-Friable Material-TEM
Sample: 6107
Technology: TEM
Prep Method:
Target: %
Limits: 12 to 24.6 %
Basis: Robust Statistics (Normal Distribution)
Robust Mean: 18.1 %
Std Dev: 5.9446 %
Median: 18.1 %



Totals for Matrix/Analyte/Technology:

Labs: Pass: 34 Fail: 4 Total: 38

Totals for Matrix/Analyte: Labs: Pass: 34 Fail: 4 Total: 38